



ROCKWOOL LEED v4 Solutions Guide

The right choice for creating sustainable buildings
and achieving LEED® certification.



The ROCKWOOL Group is the world leader in stone wool solutions. Our product portfolio is well placed to tackle many of today's biggest sustainability and development challenges and we offer carefully designed, innovative sustainable solutions for your comfort, safety and for the benefit of the environment.

Our products

ROCKWOOL stone wool insulation products not only help in creating sustainable buildings; they are made from a natural fire safe and durable material with no added flame retardants or blowing agents.

Rock: A natural, renewable resource

All ROCKWOOL products are made from stone wool – consisting of a blend of naturally occurring volcanic diabase rock. This stone is a renewable and plentiful natural resource in itself, but just as importantly our high-tech production process ensures that all our insulation products are produced in a sustainable and environmentally responsible way.

Major energy savings

One of the best ways to reduce the energy consumption of a building is through proper insulation. ROCKWOOL stone wool products are a major energy and CO₂ saver, as they allow new and existing buildings to benefit from durable, efficient and

versatile thermal insulation. Actually, the energy savings obtained from installing the right insulation will outweigh the energy consumption used for its production in just a few months time.

In most cases, properly installed insulation can cut the building's energy need for heating or cooling of up to 70-90%. In addition, ROCKWOOL insulation works continuously and requires no maintenance or replacement. In other words, it's an investment, which will quickly pay off!

Creating sustainable buildings

The LEED® v4 Green Building Rating System includes revised performance criteria for certifying the design and construction of commercial, institutional and residential buildings. LEED® works for all buildings anywhere, regardless of where they are in their life cycle and the process is designed to inspire innovative solutions that support healthy, highly efficient and cost-saving green buildings during the design, construction, operation and maintenance of these high-performance structures.

ROCKWOOL insulation is the right choice for creating sustainable buildings and achieving LEED® v4 points for your high-performance buildings.



Energy & Atmosphere

Minimum energy performance & Optimize energy performance

Energy efficient building design requires a well-insulated and properly constructed building envelope. ROCKWOOL provides a range of thermal insulation products that can be used on the exterior, interior or both to achieve the prerequisite minimum energy performance and optimized energy performance credits.



Materials & Resources

Building life-cycle impact reduction

A properly constructed and well-insulated building envelope utilizing the long lasting high performance of ROCKWOOL thermal insulation products can assist your project team in achieving the building life-cycle impact reduction through a whole-building life-cycle assessment.

Building product disclosure and optimization - environmental product declarations

ROCKWOOL can deliver third-party UL certified industry wide cradle-to-grave EPDs according to ISO 14025 and ISO 14044 and are available for download at www.ROCKWOOL.com.

Building product disclosure and optimization - sourcing of raw materials

The ROCKWOOL Group Code of Conduct for Suppliers addresses topics such as equal opportunities, trade union recognition, fair employment terms and the abolition of child labour. This document must be signed by all of our major suppliers including but not limited to suppliers of raw materials and equipment for repair, maintenance, operations as well as suppliers with whom we spend more than US \$100,000. Currently, 75% of our key suppliers have already signed the Code of Conduct.

The ROCKWOOL Group procurement policy provides opportunity to engage with our suppliers on social and ethical topics, and implies that high-risk suppliers will be audited against our Code of Conduct. The ROCKWOOL Group has adopted the ICC *"Business Charter for Sustainable Development – Principles for Environmental Management"*, where our suppliers are also required to ensure their own suppliers meet the same standards.

Our commitment is documented through our corporate governance published in the ROCKWOOL Group Annual Report as well as the ROCKWOOL Group Sustainability Report which is self-declared and follows the Global Reporting Initiative (GRI) Sustainability Report CSR framework (GRI G4).

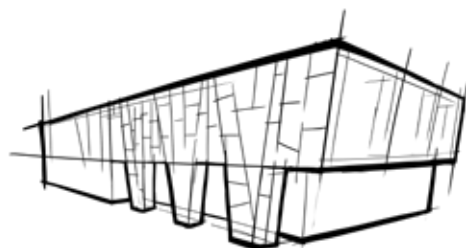
Building product disclosure and optimization - material ingredients

ROCKWOOL stone wool products are made up of approximately 97 percent minerals such as volcanic rock, as well as upcycled and recycled materials from our factories and other industries that might otherwise be landfilled or downcycled. Stone wool is also fully recyclable and can be recycled again and again without degrading its quality.

ROCKWOOL values transparency and has published complete content inventory for the product at 0.1% (1000 ppm) identified by name and Chemical Abstract Service Registration Number (CASRN), disclosing role, amount and hazard screen using GreenScreen benchmark, as defined in GreenScreen v1.2. Our AFB evo™ product also holds a Declare label.

≤ 40 %

The average recycled content of the stone wool core is up to 40%, depending on production site and product.



ROCKWOOL Products for LEED® v4

ROCKWOOL Products		Energy and Atmosphere (EA)		Materials & Resources (MR)				Indoor Environmental Quality (EQ)			
		Minimum Energy Performance	Optimize Energy Performance	Building Life-Cycle Impact Reduction	Building Product Disclosure and Optimization - Environmental Product Declarations	Building Product Disclosure and Optimization - Sourcing of Raw Materials	Building Product Disclosure and Optimization - Material Ingredients	Minimum Acoustical Performance	Low-Emitting Materials	Thermal Comfort	Acoustic Performance
Walls	Exterior Walls										
	CAVITYROCK®	x	x	x	x	x	x	x		x	x
	COMFORTBOARD™ 110	x	x	x	x	x	x	x		x	x
	COMFORTBOARD™ 80	x	x	x	x	x	x	x		x	x
	COMFORTBATT®	x	x	x	x	x	x	x	x	x	x
	Interior Walls										
	AFB®			x	x	x	x	x	x		x
	AFB evo™			x	x	x	Declare	x	x*		x
	SAFE'n'SOUND®			x	x	x	x	x	x		x
	ROCKBOARD® 40/60/80			x	x	x	x	x			x
	Curtain Wall										
	CURTAINROCK® 40/80	x	x	x	x	x	x	x		x	x
	Firestopping										
	ROXUL SAFE™				x	x	x	x			x
	ROXUL SAFE™ 45				x	x	x	x			x
	Metal Building										
	PLUS™ MB	x	x	x	x	x	x	x		x	x
	ROXUL SAFE™ 65	x	x	x	x	x	x	x		x	x
	ROXUL SAFE™ 55	x	x	x	x	x	x	x		x	x
	Sandwich Wall										
CONROCK 60®	x	x	x	x	x	x	x		x	x	
CONROCK®	x	x	x	x	x	x	x		x	x	
Roofs	Flat Roof										
	TOPROCK® DD	x	x	x	x	x	x	x		x	x
	TOPROCK® DD PLUS	x	x	x	x	x	x	x		x	x
	ROCKWOOL MULTIFIX™	x	x	x	x	x	x	x		x	x
	MONOBOARD®	x	x	x	x	x	x	x		x	x
	MONOBOARD® Plus	x	x	x	x	x	x	x		x	x

* UL validated formaldehyde free

Indoor Environmental Quality

Low-emitting materials

Our wellbeing goes hand-in-hand with the comfort of the environment where we work, live, learn, play or even – in the case of a hospital – recover.

All ROCKWOOL stone wool insulation batt products are certified according to GREENGUARD Gold in accordance with California Department of Public Health (CDPH) Standard Method v1.1–2010.

In addition, AFB evo™ is UL validated to be Formaldehyde Free.



ROCKWOOL North American production facilities

With production facilities strategically placed to support local resources and reduced environmental impacts from transportation, ROCKWOOL's primary raw material sources are located in close vicinity of our facilities though certain materials may be sourced from further than 100 miles (160 km).

Milton, Ontario, Canada

The ROCKWOOL Group entered the North American market for the first time in 1988. This location marks the group's first factory and serves as ROCKWOOL's head office for North American operations.

Grand Forks, British Columbia, Canada

This facility has been in operation since November 1999 and was the first expansion for ROCKWOOL within North America. The Grand Forks facility operates to meet the needs of North America's western regions.

Byhalia, Mississippi, USA

In the spring of 2014, a new 600,000 sq. ft. facility opened in Marshall County, Mississippi; approximately 30 miles south of Memphis.

***COMING SOON (2020) – Ranson, West Virginia, USA**

This new manufacturing facility will cover some 460,000 square feet and employ around 150 people.



For information on how ROCKWOOL products and resource-efficient solutions support sustainable design strategies, or for assistance with your calculations, contact one of our Technical Specialists at 1-877-823-9790 or visit www.ROCKWOOL.com.

At the ROCKWOOL Group, we are committed to enriching the lives of everyone who comes into contact with our solutions. Our expertise is perfectly suited to tackle many of today's biggest sustainability and development challenges, from energy consumption and noise pollution to fire resilience, water scarcity and flooding. Our range of products reflects the diversity of the world's needs, while supporting our stakeholders in reducing their own carbon footprint.

Stone wool is a versatile material and forms the basis of all our businesses. With more than 11,000 employees in 39 countries, we are the world leader in stone wool solutions, from building insulation to acoustic ceilings, external cladding systems to horticultural solutions, engineered fibres for industrial use to insulation for the process industry and marine and offshore.

AFB®, CAVITYROCK®, COMFORTBATT®, CONROCK®, CURTAINROCK®, ROCKBOARD®, TOPROCK®, MONOBOARD®, ROXUL® are registered trademarks of the ROCKWOOL Group in USA and ROXUL Inc. in Canada.

ROCKWOOL™, COMFORTBOARD™, FABROCK™, ROXUL SAFE™, ROCKWOOL PLUS™, and AFB evo™ are trademarks of the ROCKWOOL Group in USA and ROXUL Inc. in Canada.

SAFE'n'SOUND® is a registered trademark used under license by Masonite Inc.



ROCKWOOL
8024 Esquesing Line
Milton, ON L9T 6W3
Tel: 1 800 265 6878
rockwool.com